

The Eluna Resource Center **embraces** and **empowers** those it serves, provides **innovative tools** to support and guide children & families impacted by grief, addiction and other related mental health issues and fosters a **community of thought leaders** to help educate and destigmatize.

We offer personalized support in English and Spanish and a searchable and user-friendly online library of over 450 resources containing videos, articles, pointers and referrals as well as care packages and our ongoing Community Conversations and Grief Through the Lens educational series to help teens, young adults, family members, school counselors, therapists, pediatricians and educators support those grieving or impacted by substance use disorder.

User Data

	YOY Recent	2022	2021	2020	2019	2018	2017	2016	TOTALS
Sessions	7.51%	122,860	113,631	92,916	63,520	65,366	25,588	8,159	492,040
Pageviews	7.14%	200,812	186,472	162,304	92,331	113,351	57,390	23,781	836,441
Users	6.18%	107,083	100,470	83,917	55,325	55,885	20,752	6,209	429,641

Most Popular Resources

Landing Page	Sessions	Min	Topic	Type
cyber-bullying-awareness	12908	1.40	Related	Partner
nuggets-an-animated	8034	0.74	Addiction	Partner
scholarships-for-grieving-children	4612	0.38	Grief	Aggregate
family-rules-dont-talk-dont-trust-dont-feel-dr.-claudia-black	4307	0.82	Addiction	Custom
widowed-parents-incorporating-new-love-and- re-partnering	4217	0.69	Grief	Custom
top-5-grief-books-for-children-ages-13-17	3973	0.57	Related	Custom
10-ways-to-help-when-your-child-is-depressed1	3839	0.71	Related	Partner
art-therapy-the-why-and-how-from-art-with-heart	3377	0.70	Related	Partner
activity-inside-out-getting-to-know-my-emotions	3132	0.51	Related	Custom
crisis-hotlines-common-hotline-phone-numbers	3005	0.44	Related	Custom

Resource Development

In 2022 we increased the capacity of our online library with innovative resources at an unprecedented level: **48 Eluna Custom Resources, 16 Resources in Spanish and 50 Curated Resources from Trusted Sources.**



Highlights include:

- [Custom Suicide Grief](#)
- [Custom Covid Resources](#)
- [Spanish/ Español](#)
- [New and Updated Book Recommendations](#)
- [Postcard Pointers](#)

Personalized Care

Knowing that many people are often unsure or nervous about reaching out for help, the Eluna Resource Center offers confidential personalized support in English and Spanish via phone and email with a turnaround time of 24 hours. The following is provided with all personalized support:

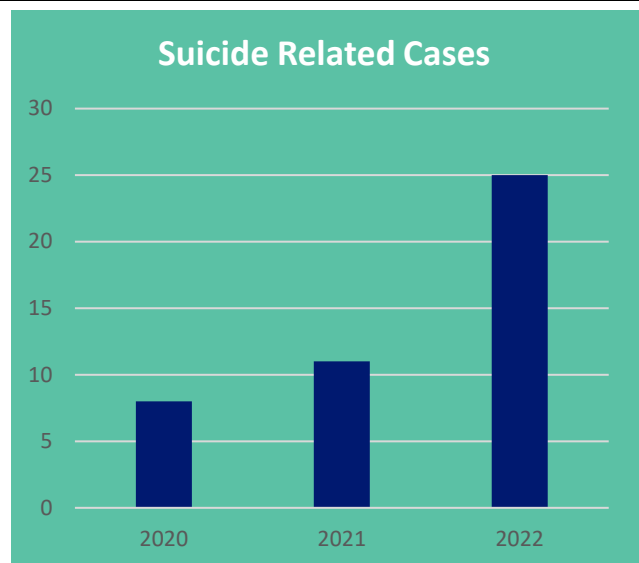
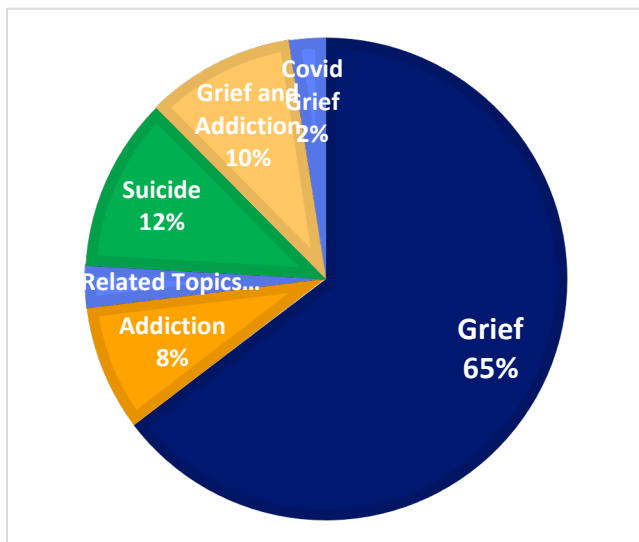
- An individualized letter with age-appropriate resources and referrals
- Additional suggested articles, books and activities
- Warm Referrals: camp contact information for Eluna and other youth and family programs
- List of support links on the Eluna Resource Center and to other trusted sources

In 2022, the ERC provided Direct Service to **385 youth and families** and reached the milestone of **supporting over 1000 personalized support cases**

Cases Year-Over-Year Growth

2016	2017	2018	2019	2020	2021	2022	TOTAL CASES
75	155	231	179	132	108	239	1131

Personalized Care - Case Topic: Why are people reaching out for support?



Community Conversations in 2022

Moderated by award winning journalists and featuring the voices of Eluna families and mental health professionals, our [Community Conversations](#) series explores topics relating to grief and addiction, the effects of these issues on our communities, and what each of us can do to help.

1. Breaking the Cycle of Addiction through Mentoring



[The conversation](#), moderated by Jennifer Lewis-Hall of PHL17, featured Camp Mariposa mentors, participants, and program directors, highlighted how trained mentors are successfully helping youth and families cope with a loved one's substance use disorder and preventing the next generation from developing their own addiction.

225 Registered Attendees

2. Grief Through the Lens Cultural Series

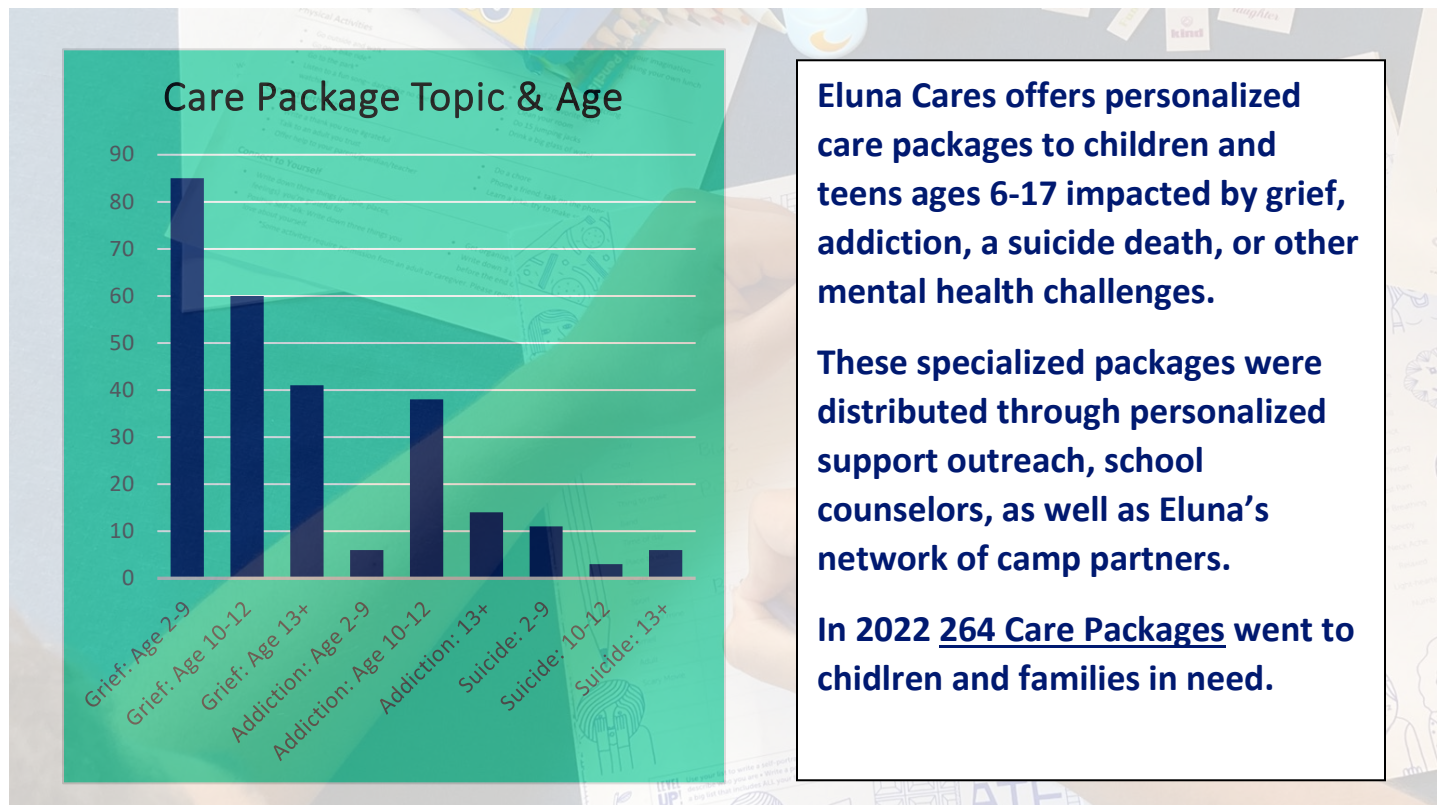
This series builds on Community Conversations to address the stigma around grief by deepening our cultural competence in bereavement, prevention and celebrating the tapestry of experience in our communities

In 2022, we explored traditions among Black communities. Our panel included social workers, psychologists, public health advocates, and diversity experts who specialize in understanding the impact of intergenerational trauma, building resiliency, and supporting grieving children and families. [Community Conversation: Grief Through the Lens of Black Communities | Eluna Network](#)

651 Registered Attendees



Eluna Cares Update



Online User Survey Results

What topic brought you to the Resource center?

